



Info-Explorer



“A powerful, affordable BI tool supporting integrated analysis & budgeting”

OUR DECISION MAKING IS SO MUCH FASTER AND BETTER INFORMED NOW.



Why use Info-Explorer?

Analyze business performance in multi-dimensional cubes, with the familiarity of a spreadsheet-type layout. Combine data from multiple sources. Ideal for integrated analysis and budgeting.

Data Sources & Processing

- Fed from your Sage 300 database, with background in-memory processing
- Include data from other SQL & ODBC databases, e.g. CRM
- Incorporate user-defined calculations
- Work online or offline
- Export views to Microsoft Excel®, CSV or HTML
- Security options to protect your data

Combine with **Process Scheduler** to automate the refresh and distribution of Info-Explorer cubes.

Slice & Dice Analysis

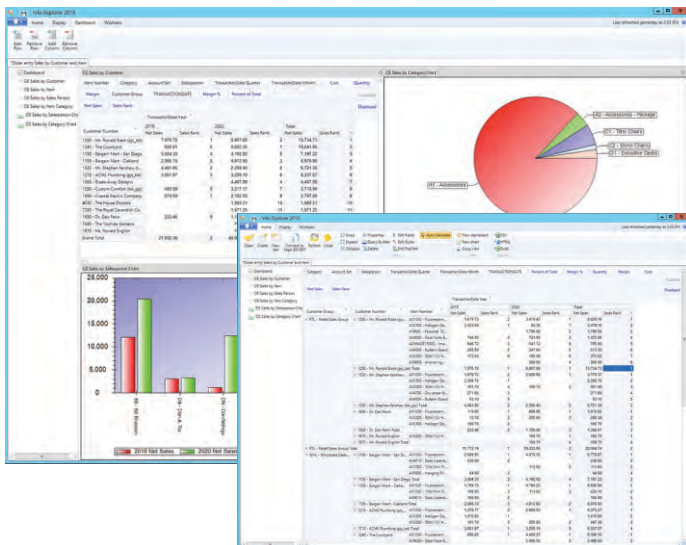
- Change dimensions (e.g. product, customer, region, period, employee) for clearer insight
- Dynamically control your view, filter your data, add and remove facts and dimensions
- Drill through to Sage 300 data entry screens for more information
- Roll up and consolidate to focus on high-level results

Presentation & Personalization

- Create and save multiple views, and convert to charts
- Create your own dashboards, highlighting exceptions and trends
- Apply your own formatting styles, e.g. 'traffic light' reporting
- Personalize, e.g. use custom styles to highlight amended data

Lite Edition – Free!

- A free, functional edition - no time limit, no commitment
- Add intuitive BI to any Sage 300 implementation
- Analyze your own data within pre-defined sample cubes
- No need to upgrade, unless you want additional features



Dashboard and View analyzing Sales Ranking

Work *smarter* with Orchid

Budgeting Features

The Writeback edition lets you use the same interface for analysis and budgeting:

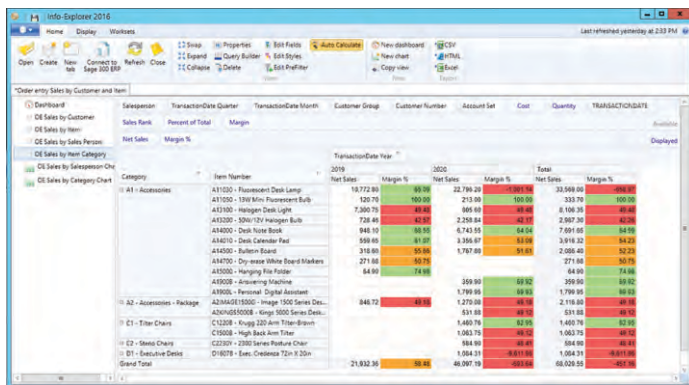
- Budget beyond General Ledger level
- Build budgets bottom-up or top-down
- Insert a budget total and let Info-Explorer populate the build-up
- Adjust budgets using multiple spread methods
- Maintain multiple budget versions
- Write budget data back to your Sage 300 database
- Combine actual and budget data for forecasting

 Use **Optional Tables** to store custom data in Sage 300, then incorporate it into your budgets and forecasts using Info-Explorer

Sample Cubes Included

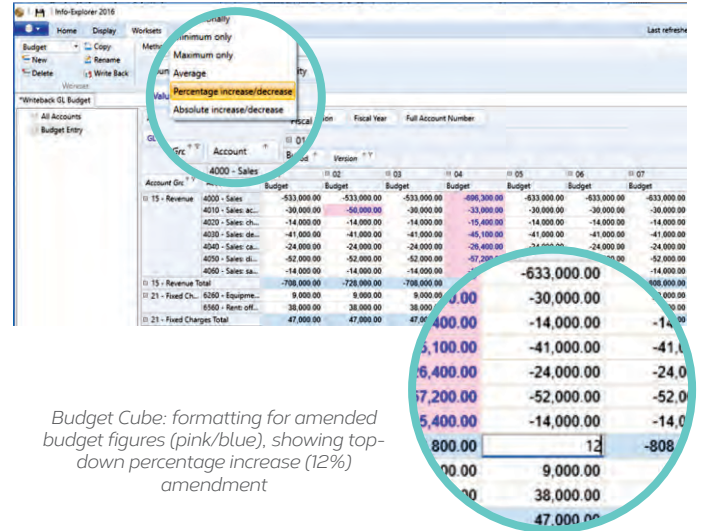
Use them to simplify getting started, or as a base for creating your own cubes. Available for:

- Sage 300 GL, AR, AP, PO, PJC, IC, OE/Sales Analysis
- Sage 300 US & Canadian Payroll
- Orchid Extender, RMA, Bin Tracking
- Budgeting
- Selected 3rd Party products



| Item Number | 2019 Net Sales | Margin % | Total Net Sales | Margin % |
|--|----------------|----------|-----------------|----------|
| A11020 - Fluorescent Desk Lamp | 182,772.93 | 89.78 | 22,789.28 | 89.88 |
| A11020 - 13W Mini Fluorescent Bulb | 120.78 | 100.00 | 213.85 | 100.00 |
| A11020 - Halogen Desk Light | 7,300.79 | 89.82 | 8,100.38 | 89.82 |
| A10300 - 30W 12V Halogen Bulb | 728.48 | 81.81 | 2,159.84 | 41.17 |
| A34000 - Desk Nurse Book | 948.10 | 88.51 | 6,743.55 | 64.54 |
| A34010 - Desk Calendar Pad | 569.88 | 81.81 | 3,356.87 | 81.81 |
| A14000 - Rubber Stamp | 318.80 | 89.88 | 1,792.68 | 91.81 |
| A44700 - Dry-erase White Board Markers | 271.88 | 80.78 | 271.88 | 80.78 |
| A43000 - Hanging Kit Folder | 64.90 | 78.88 | 64.90 | 78.88 |
| A43008 - Archiving Machine | 599.90 | 89.82 | 359.90 | 89.82 |
| A39005 - Personal Digital Assistant | 1,799.85 | 89.81 | 1,799.85 | 89.82 |
| A2444010000 - Image 500 Series Des... | 848.72 | 88.88 | 1,270.88 | 88.88 |
| A2444050008 - King 5000 Series Des... | 631.88 | 89.12 | 531.88 | 89.12 |
| C1 - Tiler Chairs | 1,480.78 | 82.15 | 1,480.78 | 82.15 |
| C2008 - High Back Arm Tiler | 1,680.78 | 84.82 | 1,680.78 | 84.82 |
| E2 - Metal Chairs | 884.88 | 88.88 | 884.88 | 88.88 |
| D1 - Executive Desks | 1,084.31 | 88.11 | 1,084.31 | 88.11 |
| Grand Total | 21,832.38 | 88.88 | 48,397.78 | 88.88 |

View showing traffic light reporting



Budget Cube: formatting for amended budget figures (pink/blue), showing top-down percentage increase (12%) amendment

| Account | Budget | Budget | Budget | Budget | Budget | Budget | Budget | Budget |
|--------------------------|-------------|-------------|-------------|-------------|-------------|-------------|-------------|-------------|
| 4000 - Sales | -533,000.00 | -533,000.00 | -533,000.00 | -533,000.00 | -533,000.00 | -533,000.00 | -533,000.00 | -533,000.00 |
| 4010 - Sales ac... | -30,000.00 | -50,000.00 | -30,000.00 | -30,000.00 | -30,000.00 | -30,000.00 | -30,000.00 | -30,000.00 |
| 4020 - Sales ch... | -14,000.00 | -14,000.00 | -14,000.00 | -14,000.00 | -14,000.00 | -14,000.00 | -14,000.00 | -14,000.00 |
| 4030 - Sales dis... | -41,000.00 | -41,000.00 | -41,000.00 | -41,000.00 | -41,000.00 | -41,000.00 | -41,000.00 | -41,000.00 |
| 4040 - Sales ca... | -24,000.00 | -24,000.00 | -24,000.00 | -24,000.00 | -24,000.00 | -24,000.00 | -24,000.00 | -24,000.00 |
| 4050 - Sales d... | -52,000.00 | -52,000.00 | -52,000.00 | -52,000.00 | -52,000.00 | -52,000.00 | -52,000.00 | -52,000.00 |
| 4060 - Sales sa... | -14,000.00 | -14,000.00 | -14,000.00 | -14,000.00 | -14,000.00 | -14,000.00 | -14,000.00 | -14,000.00 |
| 15 - Revenue Total | 798,000.00 | 728,000.00 | 708,000.00 | 638,000.00 | 608,000.00 | 578,000.00 | 548,000.00 | 518,000.00 |
| 21 - Fixed Ch... | 8,000.00 | 8,000.00 | 8,000.00 | 8,000.00 | 8,000.00 | 8,000.00 | 8,000.00 | 8,000.00 |
| 6580 - Rent off... | 38,000.00 | 38,000.00 | 38,000.00 | 38,000.00 | 38,000.00 | 38,000.00 | 38,000.00 | 38,000.00 |
| 21 - Fixed Charges Total | 47,000.00 | 47,000.00 | 47,000.00 | 47,000.00 | 47,000.00 | 47,000.00 | 47,000.00 | 47,000.00 |

Edition Guide

LITE - FREE!

- Analyze your data with pre-defined cubes (*published on Orchid's Website*)
- Customize cubes, charts and dashboards (*but not underlying data queries*)

STANDARD

- Create new cubes
- Create new data queries (*or amend existing ones*)
- Export cube data

WRITEBACK

- Writeback to your Sage 300 database (*or other SQL and ODBC databases*)
- Budgeting (*see Budgeting Features on this page*)

 My client loves Orchid Info-Explorer. In their words, it has them 'purring like a kitten'.

MARK BINKLEY, DATAQUEST SOLUTIONS, IL, USA

More information

Further information about Info-Explorer, including videos, is available from Orchid's Website: www.orchid.systems/products/info-explorer.

Minimum Requirements

Requires Microsoft .NET Framework 4 and a supported version of Windows. Licensed per PC. Users do not need to be logged into Sage 300 or need LanPaks unless they drill through to Sage 300 data-entry screens from the cube. Features relate to the latest supported version.

Contact your Sage Software Solution Provider

© 2021 Orchid Systems. All rights reserved.

All trademarks are registered trademarks or trademarks of their respective companies.

v-211

