



# Info-Explorer



OrchidSystems

Sage Tech Partner

“A powerful, affordable BI tool supporting integrated analysis & budgeting”

## Why use Info-Explorer?

Analyze business performance in multi-dimensional cubes, with the familiarity of a spreadsheet-type layout. Combine data from multiple sources. Ideal for integrated analysis and budgeting.

## Data Sources & Processing

- Fed from your Sage 300 database, with background in-memory processing
- Include data from other SQL & ODBC databases, e.g. CRM
- Incorporate user-defined calculations
- Work online or offline
- Export views to Microsoft Excel®, CSV or HTML
- Security options to protect your data



Combine with **Process Scheduler** to automate the refresh and distribution of Info-Explorer cubes.

OUR DECISION MAKING IS SO MUCH FASTER AND BETTER INFORMED NOW.



## Slice & Dice Analysis

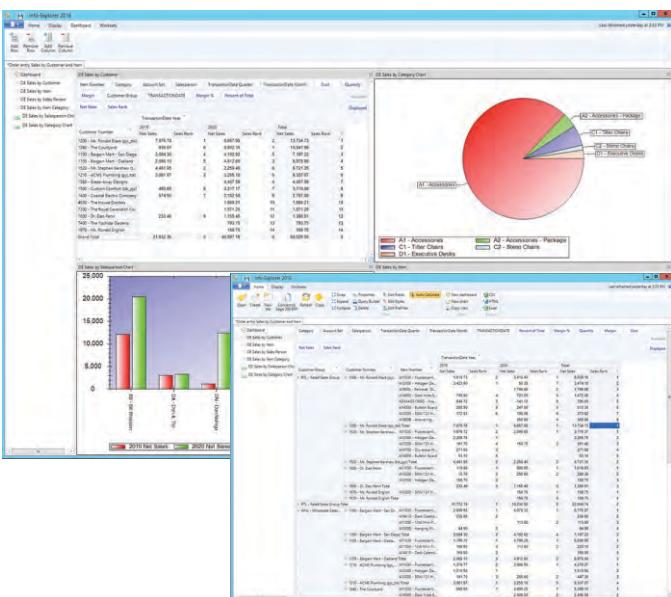
- Change dimensions (e.g. product, customer, region, period, employee) for clearer insight
- Dynamically control your view, filter your data, add and remove facts and dimensions
- Drill through to Sage 300 data entry screens for more information
- Roll up and consolidate to focus on high-level results

## Presentation & Personalization

- Create and save multiple views, and convert to charts
- Create your own dashboards, highlighting exceptions and trends
- Apply your own formatting styles, e.g. 'traffic light' reporting
- Personalize, e.g. use custom styles to highlight amended data

## Lite Edition – Free!

- A free, functional edition - no time limit, no commitment
- Add intuitive BI to any Sage 300 implementation
- Analyze your own data within pre-defined sample cubes
- No need to upgrade, unless you want additional features



Dashboard and View analyzing Sales Ranking

## Budgeting Features

The Writeback edition lets you use the same interface for analysis and budgeting:

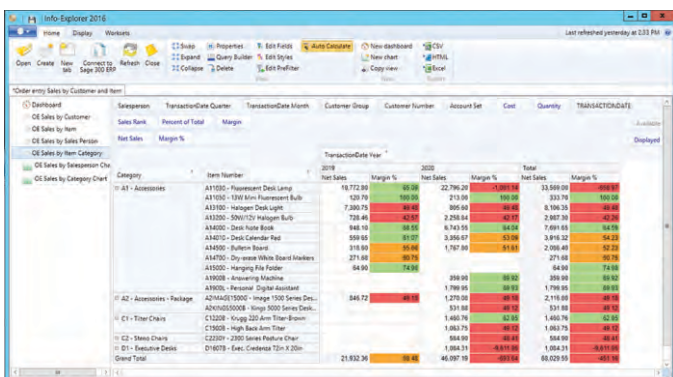
- Budget beyond General Ledger level
- Build budgets bottom-up or top-down
- Insert a budget total and let Info-Explorer populate the build-up
- Adjust budgets using multiple spread methods
- Maintain multiple budget versions
- Write budget data back to your Sage 300 database
- Combine actual and budget data for forecasting

 Use **Optional Tables** to store custom data in Sage 300, then incorporate it into your budgets and forecasts using Info-Explorer

## Sample Cubes Included

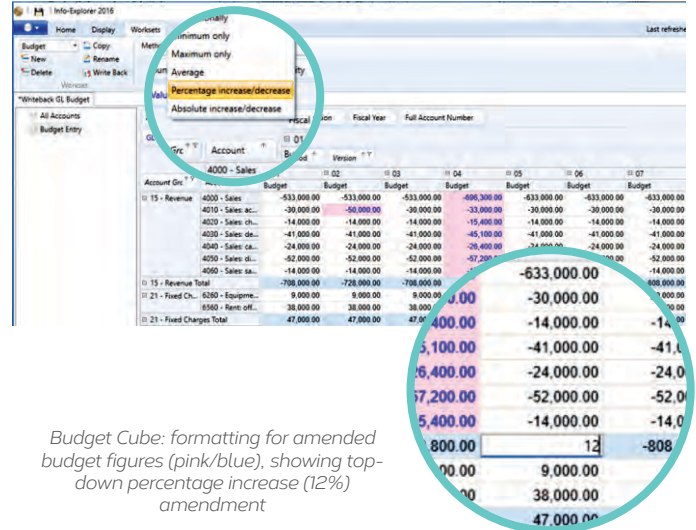
Use them to simplify getting started, or as a base for creating your own cubes. Available for:

- Sage 300 GL, AR, AP, PO, PJC, IC, OE/Sales Analysis
- Sage 300 US & Canadian Payroll
- Orchid Extender, RMA, Bin Tracking
- Budgeting
- Selected 3rd Party products



Item Number	Item Name	2019 Net Sales	2019 Margin %	2020 Net Sales	2020 Margin %	2021 Net Sales	2021 Margin %
A11000 - Fluorescent Desk Lamp		19,772.90	62.56	22,796.20	63.95	13,569.00	69.87
A11001 - 12W Mini Fluorescent Bulb		120.70	100.00	273.00	100.00	933.70	100.00
A13100 - Hanging Desk Light		7,300.75	89.85	805.60	88.85	8,196.35	89.80
A13101 - 50W/120V Hanging Bulb		728.48	82.88	2,258.14	82.88	2,867.30	82.76
A14000 - Desk Note Book		848.10	88.55	6,743.55	84.24	7,691.05	84.78
A14001 - Desk Calendar Pad		559.85	91.07	3,356.67	87.59	3,891.32	84.23
A14002 - Bulletin Board		119.80	94.66	1,767.80	94.66	2,068.40	87.20
A14700 - Dry-erase White Board Markers		271.80	88.18	271.80	88.18	271.80	88.78
A18000 - Hanging File Folder		64.90	74.93	64.90	74.93	64.90	74.93
A19000 - Answering Machine		399.00	88.00	399.00	88.00	399.00	88.00
A19001 - Personal Digital Assistant		1,798.95	88.93	1,798.95	88.93	1,798.95	88.93
A21000/11000 - Image 1000 Series Desk		1,278.00	88.00	2,118.00	88.00	2,118.00	88.00
A21000/2000 - Image 1000 Series Desk		531.00	88.12	531.00	88.12	531.00	88.12
C1 - Toner Cartridges		1,480.76	82.50	1,480.76	82.50	1,480.76	82.50
C12000 - Kyocera 2300 Arm Toner-Brown		1,663.76	88.00	1,663.76	88.00	1,663.76	88.00
C12000 - Kyocera 2300 Series Feature Chair		584.00	88.80	584.00	88.80	584.00	88.80
C12000 - High Back Arm Chair		1,663.76	88.00	1,663.76	88.00	1,663.76	88.00
D1 - Executive Desks		1,884.31	81.10	1,884.31	81.10	1,884.31	81.10
Grand Total		21,832.34	88.44	44,987.18	89.08	48,029.95	89.18

View showing traffic light reporting

Budget Cube: formatting for amended budget figures (pink/blue), showing top-down percentage increase (12%) amendment

## Edition Guide

LITE – FREE!

- Analyze your data with pre-defined cubes (published on Orchid's Website)
- Customize cubes, charts and dashboards (but not underlying data queries)

STANDARD

- Create new cubes
- Create new data queries (or amend existing ones)
- Export cube data

WRITEBACK

- Writeback to your Sage 300 database (or other SQL and ODBC databases)
- Budgeting (see Budgeting Features on this page)



 My client loves Orchid Info-Explorer. In their words, it has them 'purring like a kitten'.  
MARK BINKLEY, DATAQUEST SOLUTIONS, IL, USA

## More information

Further information about Info-Explorer, including videos, is available from Orchid's Website: [www.orchid.systems/products/info-explorer](http://www.orchid.systems/products/info-explorer).

## Minimum Requirements

Requires Microsoft .NET Framework 4 and a supported version of Windows. Licensed per PC. Users do not need to be logged into Sage 300 or need LanPaks unless they drill through to Sage 300 data-entry screens from the cube. Features relate to the latest supported version.

Contact your Sage Software Solution Provider

© 2021 Orchid Systems. All rights reserved.

All trademarks are registered trademarks or trademarks of their respective companies.