



# Extender



OrchidSystems

sage

Development  
Partner Endorsed  
Development  
Partner Gold

**“A cost-effective way to configure, customize and extend Sage 300”**

## Why use Extender?

- Customize Sage 300 without complex code
- All configurations and scripts stored securely in your Sage 300 database
- Easy to upgrade, no need to recompile your customizations
- Works with all Sage 300 core modules, plus 3rd Party modules developed in the SDK



## Integration

Synchronize between systems more efficiently by calling external programs when changes occur within Sage 300.

## Workflow

Add consistency and transparency to approvals and other critical business processes with structured workflows. Pre-defined Workflow Actions cater for common business scenarios. Monitor and manage progress with the Workflow Console.

## Extender Configurator

The Configurator edition lets you tailor Sage 300 without writing a single line of code.

## Alerts and Notifications

Configure Extender to monitor selected fields. When changes occur, trigger real-time email alerts, or display details on Sage 300 screens using Orchid Notes.

## Logging

Create an audit trail of key changes to the Sage 300 database. Log what changed, when it changed, who made the change. Access logs using context-sensitive screen icons.



Let remote workers participate in workflows with Remote Action Service and/or the Workflow Anywhere mobile App.

**ORCEWF - A/R Customers**

Customer Number: **BARMART**

Customer Name: **Bargain Mart Stores Inc.**

Account Type: **Open Item**

Account Set: **USA**

Terms Code: **N30**

Billing Cycle: **BILLMT**

Interest Profile: **Interest Profile - Wholesale**

Payment Code: **CHECK**

Delivery Method: **Mail**

Credit Bureau Information

Number: **1432**

Rating: **AA**

Date: **05/2010**

Issue Credit Warning When

☒ Total Outstanding Balance Exceeds the Credit Limit of **55,000.00**

☐ A/R Transactions Overdue by **0** Days or More Exceed the Overdue Limit of **0.00**

Currency: **USD**

Rate Type: **SP**

**ORCEWF - Extender Log**

From	To	View ID	Field	User	From Key
11/01/2021	11/02/2021	AR0024			
11/02/2021	17:59:37	AR0024	1	ANNE	BARMART
11/02/2021	17:59:34	AR0024	1	ANNE	BARMART
8/02/2021	15:03:00	AR0024	1	NATHALIE	BARMART

**ORCEWF - Extender Workflow Console**

Template ID	Started On	Started By	Assigned To	New ID	Record Key	Description	Requested Value
AP Invoice Batch Post	16/12/2020	14:24:35	ANNE	ACCOUNTS	AP0020	IS	216.50
Create EFT File Approval	16/12/2020	14:24:55	ANNE	ACCOUNTS	AP0030	PY.1	36710.25
AP Vendor Approval	16/12/2020	14:25:25	ANNE	ACCOUNTS	AP0015	1202	Active
Sales Order Approval	16/12/2020	14:38:44	ANNE	SALESAGR	OE0520	OPRD000000000000133	4,590.30
Sales Order Approval	16/12/2020	14:59:48	ANNE	SALESAGR	OE0520	OPRD000000000000135	8,902.80
RMA Approval	16/12/2020	17:03:28	ANNE	SALESAGR	RA0001	REP0000000000000001	159.38
RMA Approval	16/12/2020	17:25:42	ANNE	SALESAGR	RA0001	WAR0000000000000005	40.94
RMA Approval	16/12/2020	17:25:42	ANNE	FINMGR	AR0024	8330	158
			ANNE	FINMGR	AR0024	BARMART	55000.000

**Email Notification:**

communications@samplecompany.ltd

Customer BARMART Bargain Mart Stores Inc. credit limit has changed

The change was done by ANNE doing an Update to the customer's record.

The change was done on 11/02/2021 at 17:59:37

Customer Credit Limit change triggers email, Extender Log entry and Extender Workflow instance

# Work *smarter* with Orchid

## Extender Developer

The Developer edition includes all the Configurator features, while also letting you take customization of Sage 300 to the next level using Python scripts.

### Business Logic (Sage 300 Views)

Introduce custom validations, conditional alerting, or automate business processes.

### Screen Customizations

Modify existing screens in ways not possible at the View level (e.g. tailor tabs, fields, buttons, and finders). Create new screens without the need for complicated programming.

### Custom Tables

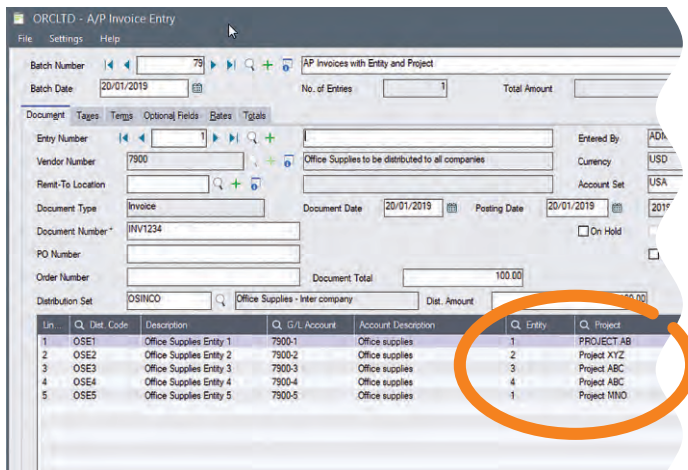
Create Sage 300 Views and associated tables, without coding. These form part of the Sage 300 database and database dictionary, so they can be accessed, dumped and loaded just like any other view.

### Advanced Workflow

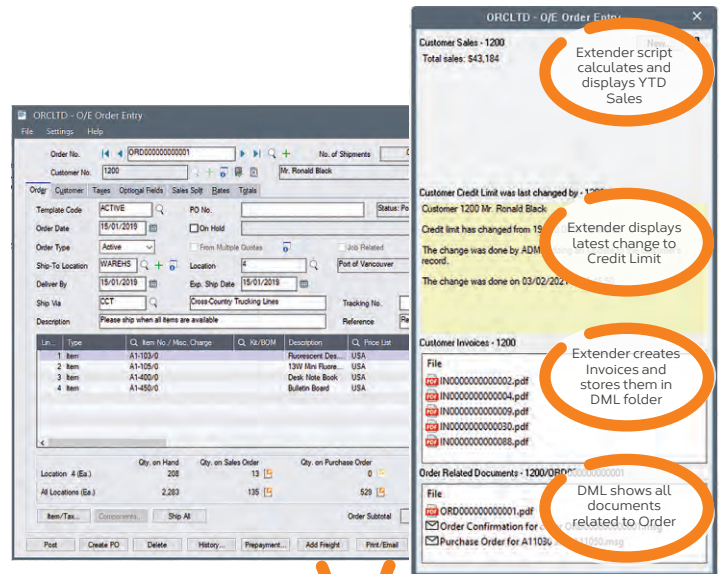
Develop custom Workflow Actions using Python to complement our pre-defined actions. Incorporate Custom View/Table data into Workflow Actions.

### Advanced Integration

Eg. integrate Sage 300 with cloud-based collaboration tools, or send shipment details to the warehouse when an order is placed.



Screen Customization with Optional Fields (Entity & Project) added to the AP Invoice Detail grid



Extender adds custom buttons to Order Entry screen, and uses Orchid Notes and Document Management Link (DML) to display relevant data and files

💡 Combine Extender Developer and Orchid Notes to generate dynamic, feature-rich 'Extended Notes'.

### Why Python?

Python is a widely used, open-source language that consistently tops "most popular language" industry surveys. We chose it as the scripting language for Extender because:

- It is an interpreted language (no compiler needed)
- Customization scripts can be stored in the Sage 300 company database
- Source code is self-documenting, and can be amended on site
- It supports the use of thousands of well-tested, open-source libraries

## More information

Further information about Extender, including videos, is available from Orchid's Website: [www.orchid.systems/products/extender](http://www.orchid.systems/products/extender).

### Minimum Requirements

Extender requires the compatible version of Sage 300 System Manager. Workflow User licences are required to access Extender Workflow functionality. Notes functionality requires Orchid Notes. Document Management Link is required to display documents. Python is installed as part of Extender.

## Contact your Sage Software Solution Provider

© 2021 Orchid Systems. All rights reserved.

All trademarks are registered trademarks or trademarks of their respective companies.

V-21.1

